



Colleges
Scotland



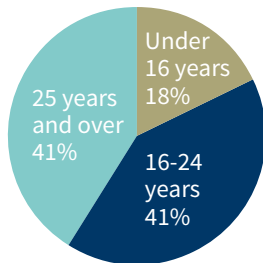
Keyfacts 2025

College Students

218,145 students

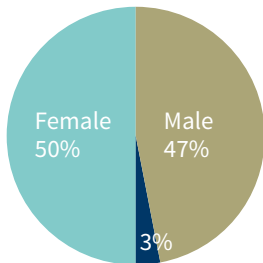
95% of all learning hours lead to a recognised qualification

Age



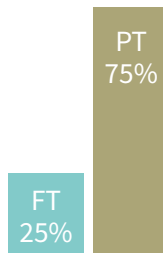
Median age is 20

Gender



Other/Prefer not to say

Full-time/ part-time



Top 5 Subject Areas

1	Health Care/Medicine/ Health and Safety	41,115 (number of students)
2	Family Care/Personal Development/Personal Care and Appearance	31,225
3	Engineering	26,485
4	Construction and Property (Built Environment)	17,210
5	Sciences and Mathematics	16,375

9 out of 10 (94%) full-time and 96% of part-time students were satisfied with their college experience

87% of college leavers go into positive destinations, with 61% choosing further study at college

23% of students have a recorded disability

9% of enrolments to full-time courses were ethnic minority students

4% of students reported a mental health condition

Care-experienced students make up 10% of enrolments to full-time FE and 4% to full-time HE

Figures above are for AY 2022-23

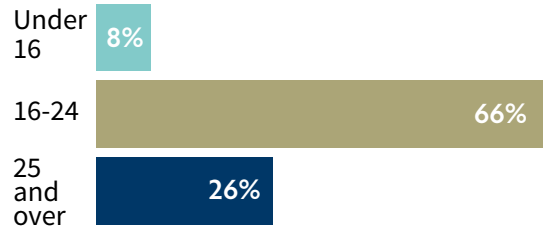
Overseas students (number of students)

Europe (including EU)	340
International (outwith Europe)	1,065
Rest of UK	1,470

204 nationalities are represented in colleges

Around 63 million hours of learning are delivered in colleges

Hours of Learning by Age



FE		HE	
FT	PT	FT	PT
41%	33%	22%	4%

33% of all learning activity took place in health and care related subjects (the largest share of any subject group)

Student Funding

Bursary: £95.5m

Discretionary: £18.4m

Childcare: £7.5m

Higher Education

Colleges delivered **20%** of all higher education in Scotland

There were **41,170** entrants to higher education in colleges with **65%** on HNC or HND programmes

25% of entrants to higher education courses in colleges are from the 20% most deprived areas of Scotland

34% of full-time first-degree entrants from the 20% most deprived areas progressed to university after graduating from college

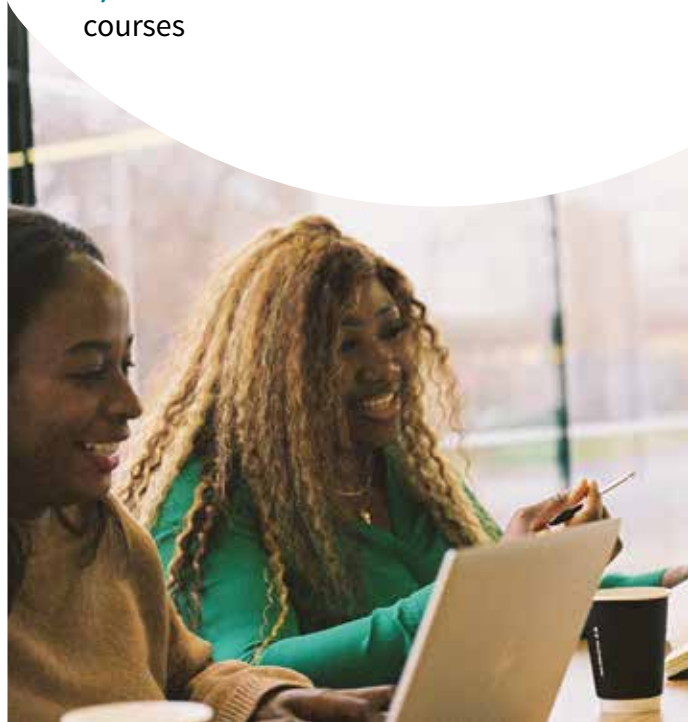
8,790 students with an HNC/D progressed from college to university – **51%** entered into year 2 or 3 at university, and **25%** were from the 20% most deprived backgrounds

Figures above are for AY 2022-23

38% of all full-time college activity is in higher education

41,115 students are studying health and social care courses, **16%** at HE level

1,090 students are on HNC Childcare courses



Further Education

26% of school leavers go into further education

1 in 5 (19%) of Scotland's 18-19 year olds attended college full-time

College is the most popular destination for school leavers with **over half (52%)** from S4 and **38%** from S5 going into further education

College is the most popular destination for those from the lowest socio-economic backgrounds with **36%** of school leavers from SIMD20 moving into further education



Industry Links

Colleges deliver **14,420** Modern Apprenticeships

94,570 enrolments are linked to industry

75,495 students are studying as part of their employment

13,910 students are studying Digital skills – **23%** at HE level

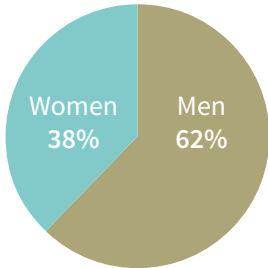
26% of students are enrolled in STEM subjects

8 colleges are STEM Assured, accredited through the STEM Foundation

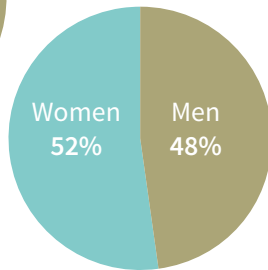
Care has the highest number of students linked to industry (**16,475**)

Management and Governance

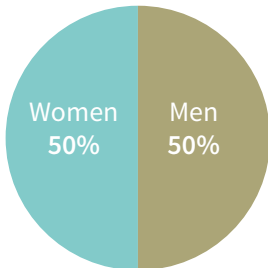
College Chairs



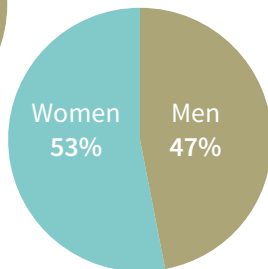
College Boards



College Principals



Senior Management



College Staff

There are **13,092** staff in colleges (**10,112** FTEs)

68% full-time and **32%** part-time

49% Teaching staff and **51%** Support staff

61% Women and **39%** Men

88% of full-time teaching staff have a recognised qualification

3% of staff are from minority ethnic groups

8% of staff have a declared disability

48% of staff are aged 51 and over

4% of staff are from the EU and **2%** from overseas outwith the EU

College Funding

For 2025-26, colleges have been allocated:

Total SFC Revenue Funding **£651.0m**

including

Student Support **£123.0m**

Increased National
Insurance costs **£5.5m**

Total Capital Funding **£64.8m**

including

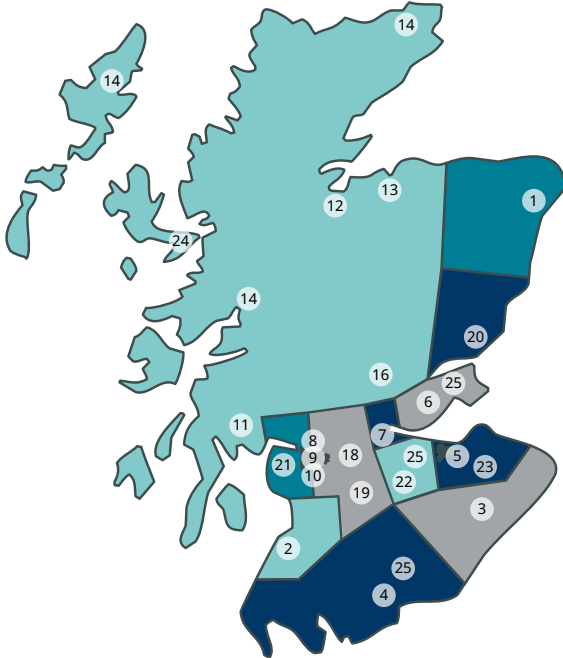
Estates Maintenance **£32.0m**

Over two thirds (70%) of college budgets go towards staffing costs

A quarter of colleges' income does not come directly from the Scottish Funding Council



Colleges



Region	College
Aberdeen and Aberdeenshire	1. North East Scotland College
Ayrshire	2. Ayrshire College
Borders	3. Borders College
Dumfries and Galloway	4. Dumfries & Galloway College
Edinburgh and Lothians	5. Edinburgh College
Fife	6. Fife College
Forth Valley	7. Forth Valley College
Glasgow	8. City of Glasgow College
	9. Glasgow Clyde College
	10. Glasgow Kelvin College
Highlands and Islands	11. UHI Argyll
	12. UHI Inverness
	13. UHI Moray
	14. UHI North, West and Hebrides
	15. UHI Orkney
	16. UHI Perth
	17. UHI Shetland
Lanarkshire	18. New College Lanarkshire
	19. South Lanarkshire College
Tayside	20. Dundee & Angus College
West	21. West College Scotland
West Lothian	22. West Lothian College
Sit outwith regional arrangements	23. Newbattle Abbey College
	24. Sabhal Mòr Ostaig
	25. Scotland's Rural College (SRUC)



When Colleges Thrive, Scotland Thrives.

info@collegesscotland.ac.uk

www.collegesscotland.ac.uk

[@CollegesScot](https://www.instagram.com/CollegesScot)

Colleges Scotland, Argyll Court, Castle Business Park,
Stirling, FK9 4TY



Colleges Scotland | Company Limited By Guarantee
Registered in Scotland No: 143210 | Scottish Charity No. SC023848

Majority of figures are for academic year 2023-24